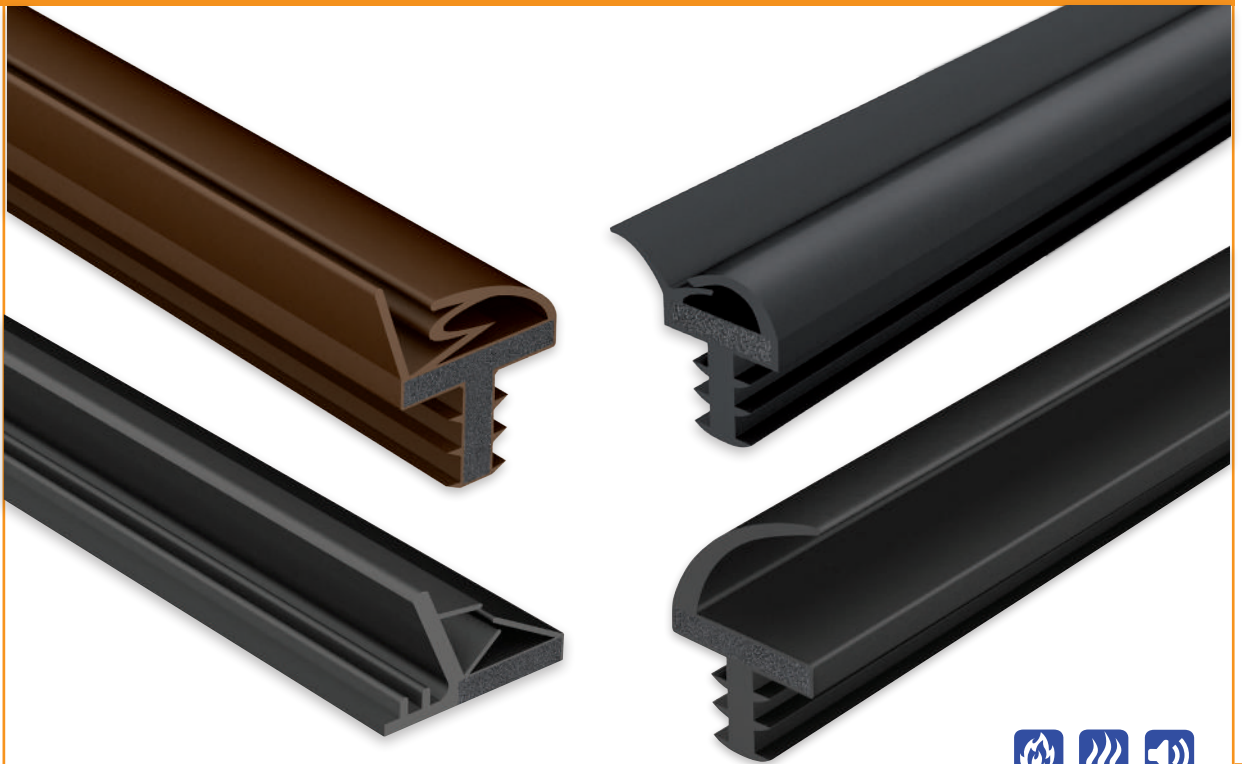


# Intumescent flexible fire and smoke seals for timber doors

GB / 1.05 / Rev. 1

## FLEXILODICE EF QS & EF BS



odice  
PASSIVE FIRE PROTECTION



## Product description

**FLEXILODICE EF QS & EF BS** are co-extruded graphite-based acoustic and intumescent seals. Co-extruded parts ensure also a cold smoke tightness.

The fire seals Flexilodice EF QS & EF BS are placed into a groove.

When exposed to fire the intumescent material expands to at least 10 times their initial thickness. The micro - porous layer formed during expansion prevents the passage of any flames, smoke or hot gases.

## Features

The **FLEXILODICE EF QS & EF BS** fire and smoke seals present the following characteristics:

- Flexible,
- Resistant to moisture and carbon dioxide,
- Forms a robust micro porous layer,
- Delivered in rolls & strips,
- Easy to cut,
- Easy to install with simple pressure into the groove.



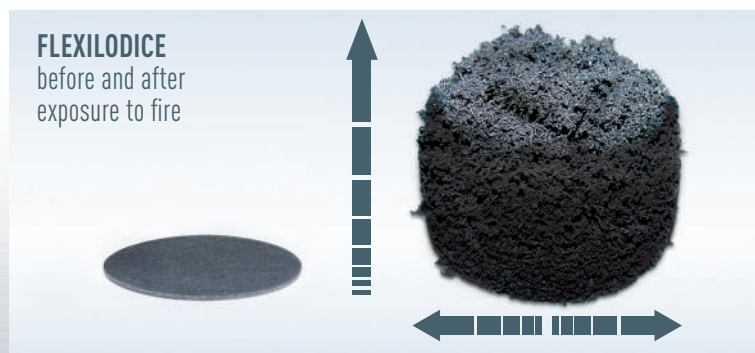
## Technical data

 Fire
  Cold smoke
  Acoustic

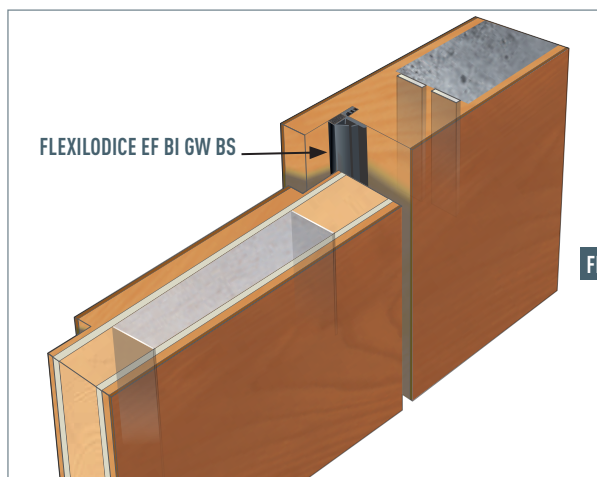
### Physical properties

Expansion activation temperature	180°C
Foaming height (30 min. at 550°C)	at least 10 times initial thickness
Expansion pressure (at 550°C)	0,48 N/mm <sup>2</sup>
Shore A hardness (ISO 868)	80 shore

Average values measured on Flexilodice by the DIBT (Germany) and reported in European technical Assessment ETA-160299.

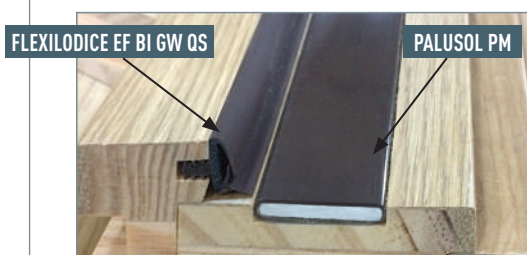


## Application



**FLEXILODICE EF QS & EF BS** intumescent fire and smoke seals are designed for interior and exterior uses:

- Peripheral seals for fire resistant & acoustical door leaves. (a good complement to PALUSOL seals in wood frames)



## Product range

### Colors

Oak, white, black, brown



## Sections

Product name	Width x Thickness (mm)	Roll lengths (m)	Cross section	Reference number
FLEXILODICE EF GW QS	10 x 2	100		2007037 A
FLEXILODICE EF BI GW QS	10 x 2	100		2007058 B
FLEXILODICE EF AHP QS	10 x 2	100		2009027 B
Product name	Width x Thickness (mm)	Strips lengths (m)	Cross section	Reference number
FLEXILODICE EF BI GW BS	18 x 3	2,1 m until 3 m		2012064 C

The manufacturing process makes it possible to supply different lengths. Please contact us.

### Tolerances

Thickness (*)	+ 0,2 mm / - 0,3 mm
Width	+ 0,2 mm / - 0,5 mm

## Installation

Since the intumescent **FLEXILODICE EF QS & EF BS** seals create an average expansion pressure, for sealing a fire retardant door it is essential that they are fitted to the edge of the frame or door leaf.

The seals are to be fixed mechanically so don't need any adhesive.

### Packaging

**FLEXILODICE EF GW QS , EF BI GW QS & EF AHP QS** all types of QS seals are delivered in rolls.

**FLEXILODICE EF BI GW BS** are delivered in cardboard or wood boxes as pre-cut strips.

### Storage

Store in a dry well-ventilated area.

### Health and safety measures

Observe usual workplace health and safety rules.

Refer to the safety data sheet of FLEXILODICE.



IMPORTANT: while the descriptions, designs, data and information contained herein are presented in good faith and believed to be accurate, it is provided for your guidance only. Because many factors may affect processing or application/use, we recommend that you make tests to determine the suitability of a product for your particular purpose prior to use. No warranties of any kind, either express or implied, including warranties of merchantability or fitness for a particular purpose, are made regarding products described or designs, data or information set forth, or that the products, designs, data or information may be used without infringing the intellectual property rights of others. In no case shall the descriptions, information, data or designs provided be considered a part of our terms and conditions of sale. Further, you expressly understand and agree that the descriptions, designs, data and information furnished by ODICE hereunder are given free of charge and ODICE assumes no obligation or liability for the description, designs, data and information given or results obtained, all such being given and accepted at your risk.



**ODICE S.A.S.** Passive Fire Protection  
Z.A.E Les Dix Muids - Rue Lavoisier - 59770 Marly - France  
Tél. +33(0)3 27 19 32 32 - Fax : +33(0)3 27 21 06 26  
Email : [info@odice.com](mailto:info@odice.com) - [www.odice.com](http://www.odice.com)